

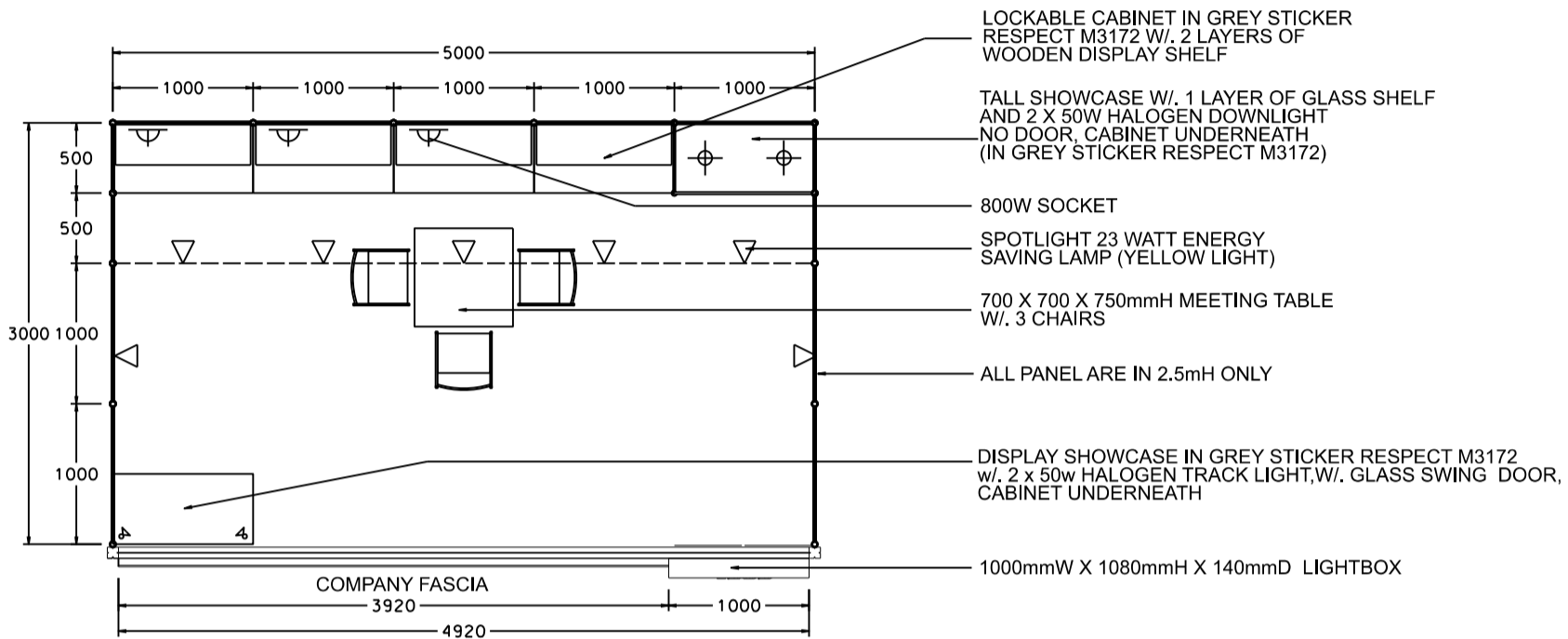
IMPORTANT NOTICE
AMENDMENT OF BOOTH LIGHTING SPECIFICATIONS

ALL LIGHTS SPECIFIED AS 23 WATT ENERGY SAVING LAMPS (BOTH SPOTLIGHT/LONGARMED) ON THIS DRAWING WILL BE CHANGED TO **13 WATT LED LAMPS**, WITH EFFECT ON THE 1ST OF JANUARY 2019.

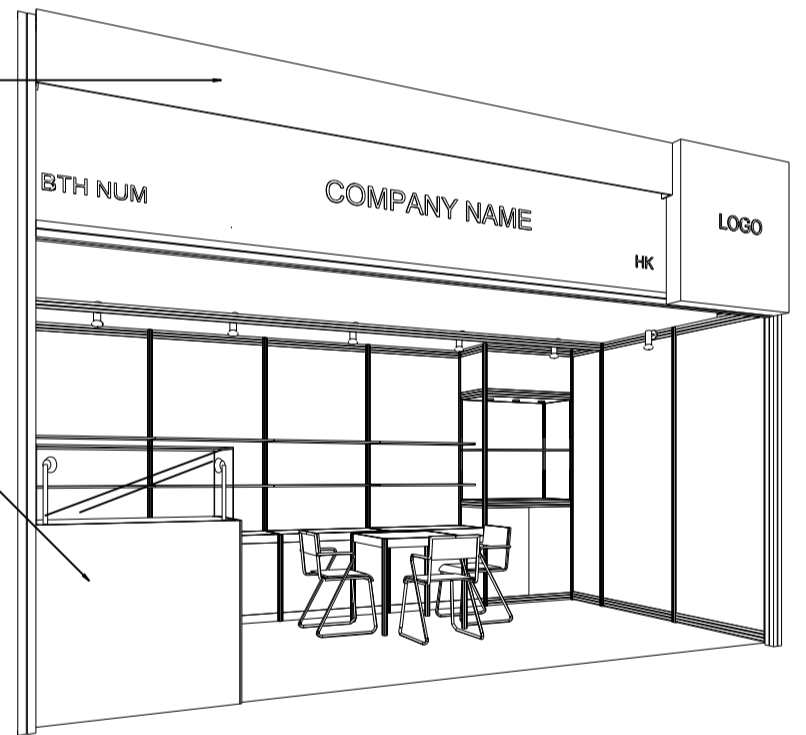
OPTION E (LOW SHOWCASE - GREY)

5M x 3M Hall of Fame Booth

五米乘三米品牌薈萃廊特級攤位



CONCEALED LIGHT TROUGH TO HIGHLIGHT COMPANY FASCIA (IN GREY COLOUR, RESPECT M3172 / PANTONE 431c)

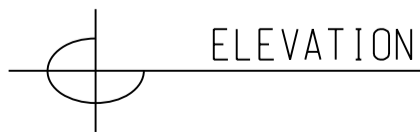
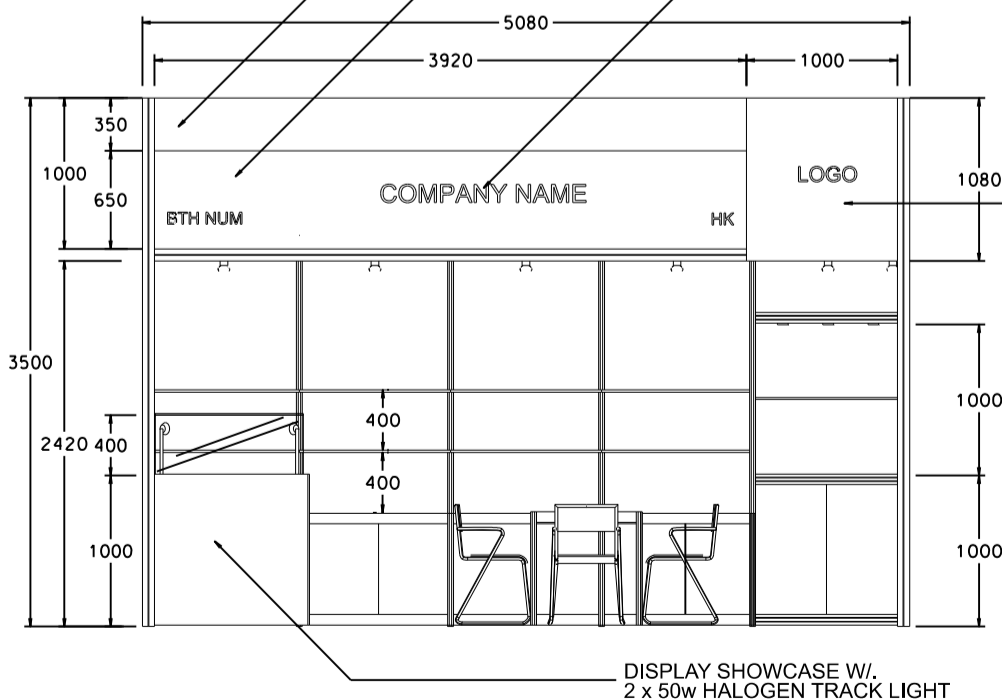


PLYWOOD COVER IN GREY COLOUR STICKER (RESPECT M3172) / PU PAINT SPRAY PANTONE 431C

STICKER RESPECT M3172 /PANTONE 431C (GREY COLOR)

FASCIA BACKGROUND IN LIGHT GREY COLOUR, OR074/PANETONE COOL GREY 7

CO. NAME LETTERS IN WHITE



BOOTH SPECIFICATIONS		QTY.
	LOCKABLE CABINET 1000L x 500W x 750H mm	4
	WOODEN DISPLAY SHELF FLAT (3000W X 300D mm)	2
	WOODEN DISPLAY SHELF FLAT (1000W X 300D mm)	2
	DISPLAY SHOWCASE W/. 2 X HALOGEN TRACK LIGHT W/. GLASS SWING DOOR, CABINET UNDERNEATH	1
	TALL SHOWCASE W/. 1 LAYER OF GLASS SHELF AND 2 X 50W HALOGEN DOWNLIGHT (NO GLASS DOOR) CABINET UNDERNEATH	1
	800W SOCKET	3
	SPOTLIGHT 23 WATT ENERGY SAVING LAMP (YELLOW LIGHT)	7
	700W x 700D x 750H mm MEETING TABLE	1
	BLACK LEATHER CHAIR	3
	CEILING BEAM	5M
	RUBBISH BIN & CARPET (15sqm.)	

*The Hong Kong Trade Development Council reserves the right to change the configuration if necessary.

*如有需要，香港貿易發展局有權更改攤位結構。